

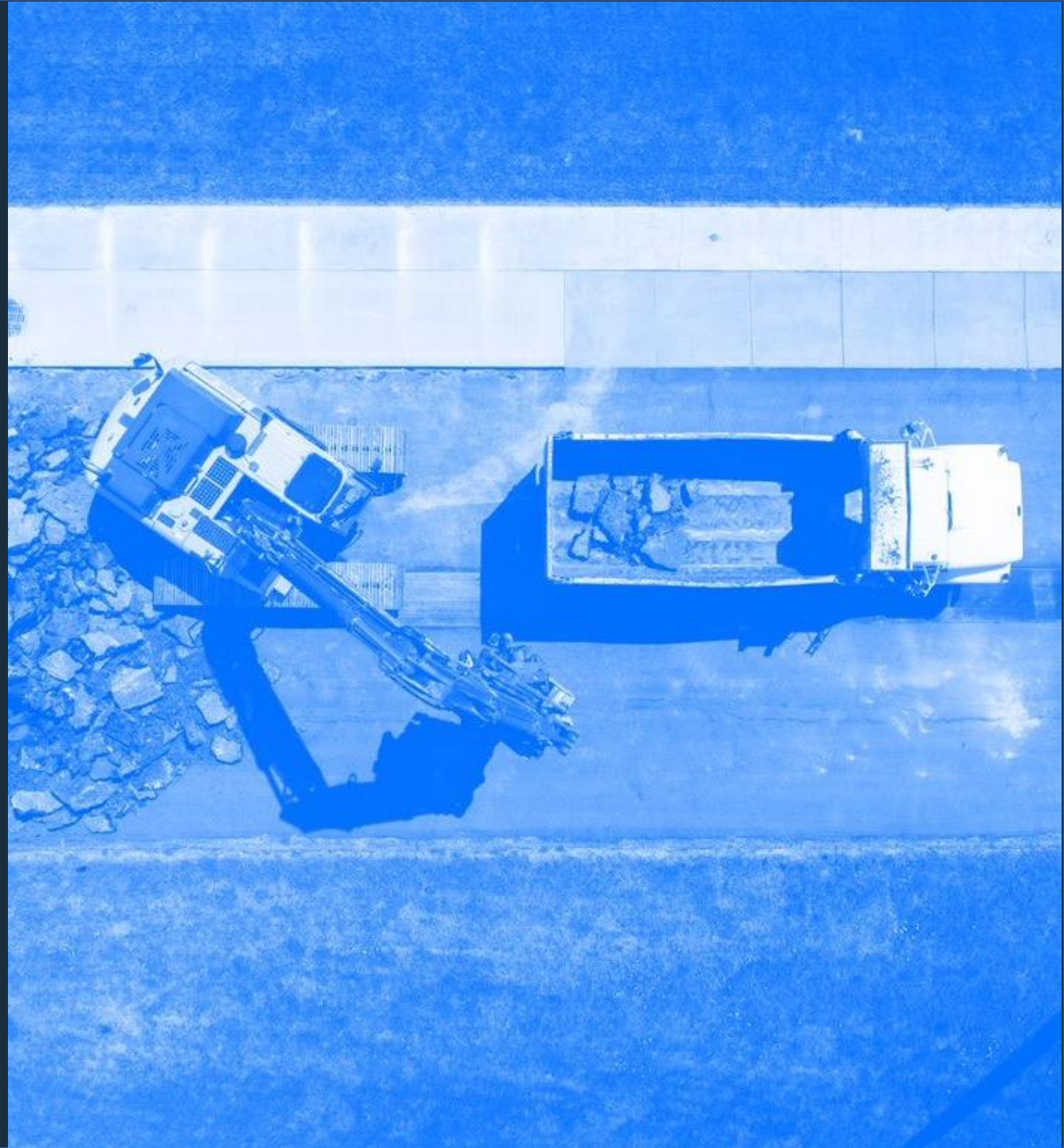
The background of the slide is a photograph of a construction site, showing scaffolding and workers. The entire image is covered with a semi-transparent blue overlay. The title text is positioned on the right side of the image.

The Future of Construction Health, Safety and Quality



A PLINX PRESENTATION
Introducing Safety simplified

**Construction
sites are
dangerous
places.
But things can't
stay the same.**





**We realise you want to
keep your people and
projects safe, on time
and in budget.**



HAZARDZONE // ACCESS CONTROL

Access control for hazard zones

Hazard Zone: an area with high potential of danger

Access Control: selective restriction of access to a place based on role and purpose.

PEOPLE



Red Zone around raised platform or stairway
Preventing falls from height



Red Zone access around earthworks
Preventing people being struck by moving vehicles



Amber zone around people
Preventing transmission of contagious disease



Control of tool use over the top of buried services
Preventing electrocution / explosion and related cost impacts.



Red zone access outside of defined area
Preventing people being struck by moving vehicles



Amber zone access under overhead working area
Preventing injury through falling objects

PEOPLE



Red Zone within works areas in tunnels
Preventing being injured through structure collapsing



Red Zone outside accessway
Preventing slips, trips and falls outside of designated clearways



Red Zone outside accessway
Preventing operatives being struck by moving vehicles outside of designated crossings



Red Zone inside lifting zone
Preventing injury through falling objects/entrapment

MACHINES



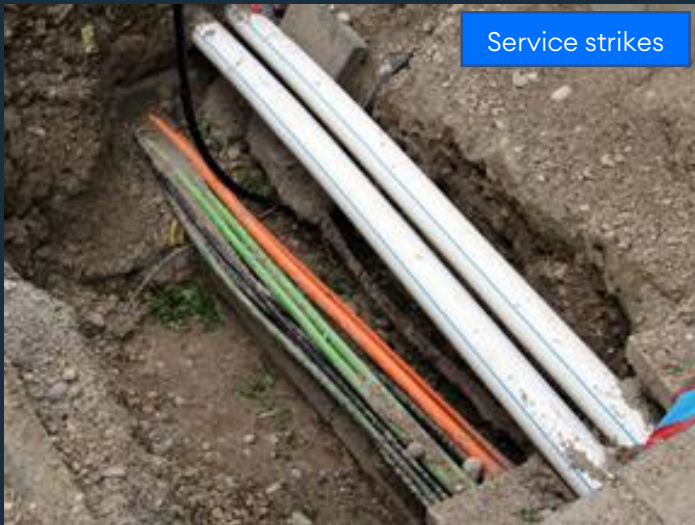
Red Zone around embankments
Preventing being struck by overturning vehicles related cost impacts.



Red zone access around machinery
Preventing people being struck by moving vehicles



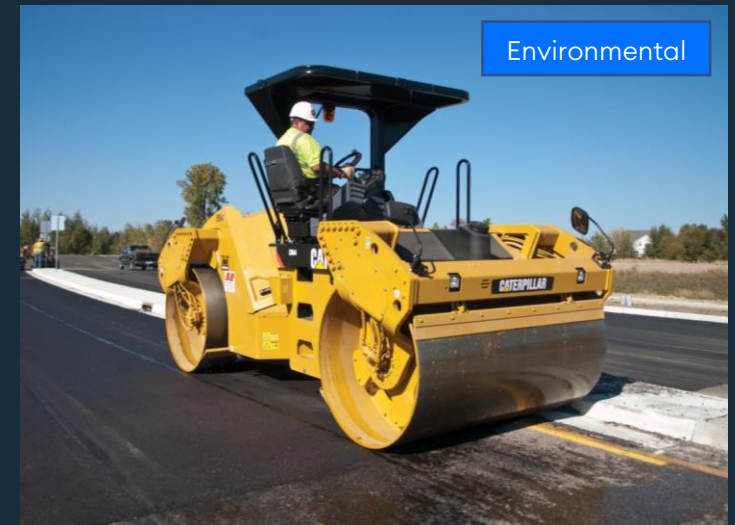
Red Zone access outside of designated area
Preventing people being struck by moving vehicles



Red zone access over the top of buried services
Preventing electrocution / explosion and related cost impacts.



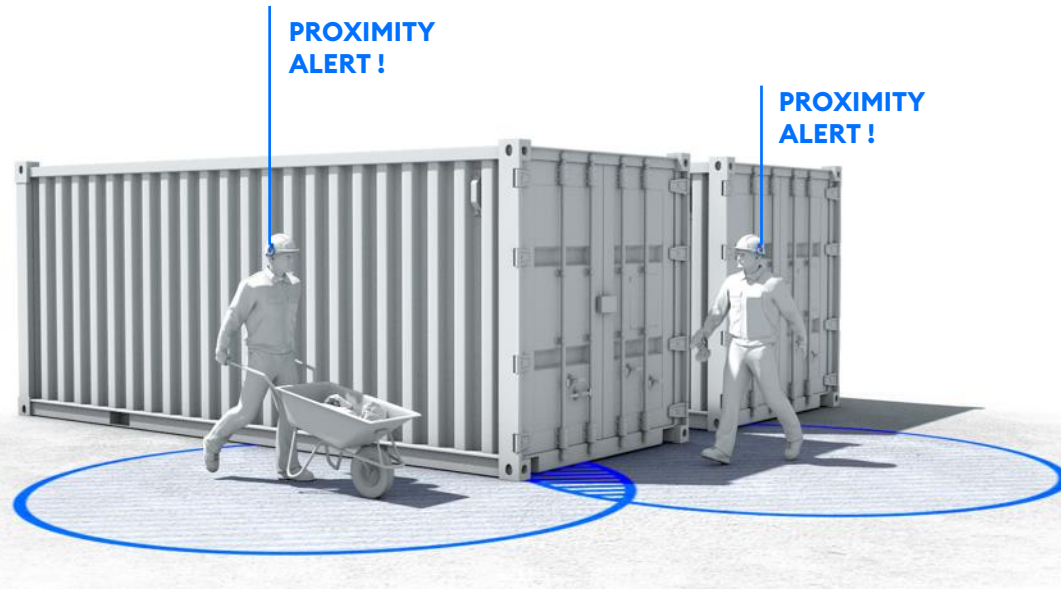
Red zone access underneath overhead services
Preventing electrocution / explosion and related cost impacts.



Amber Zone around areas sensitive to vibration
Preventing prosecution



**We realise that
technology hasn't
always been successful
in the past.**



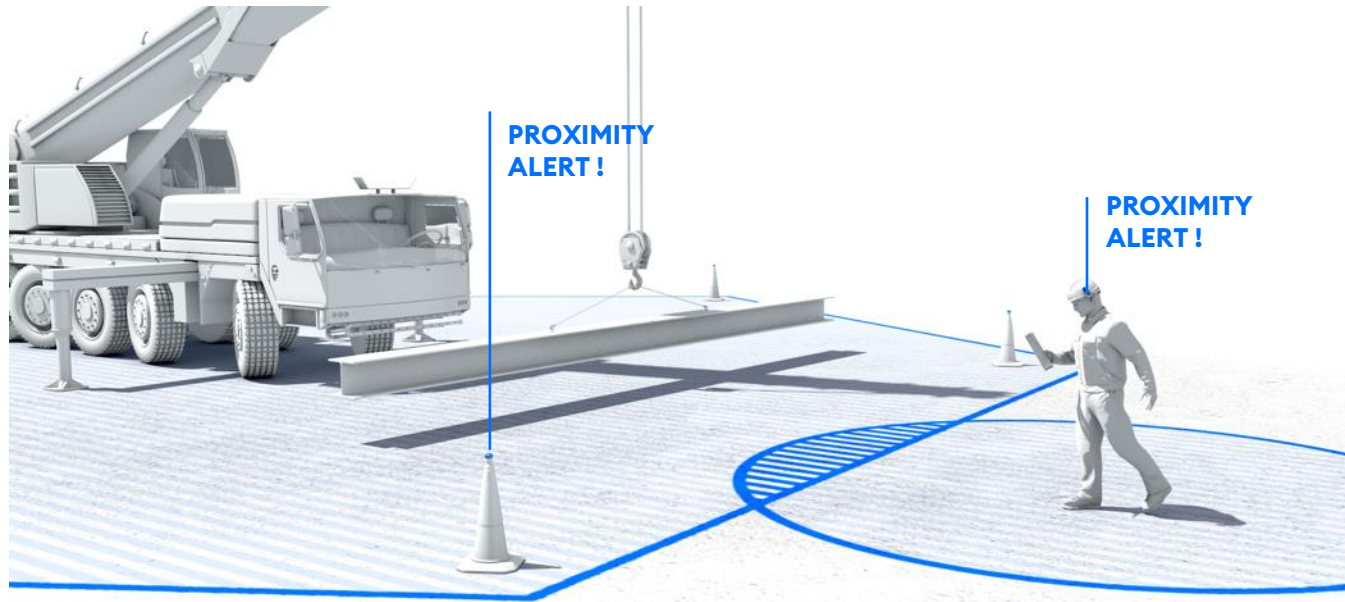
A single helmet-mounted sensor providing market-leading 360-degree protection. With audible, visual, and haptic feedback designed for construction environments, the TeamTAG can help reduce the likelihood of harm by notifying users of their unauthorised access to a zone.

PROTECT



TeamTag

- Manage social distancing
- Monitor contact tracing
- Create hazard, resource monitoring and compliance zones
- Protect people from machines
- Respond to SOS, trigger sitewide evacuation alarms



A patent protected tool which enables zones to be rapidly formed as part of the existing H&S process segregating people and plant from a hazard. HazardTags can be temporarily mounted to a cone that monitors proximity to temporary work or permanently fixed to a wall. HazardTags provide a clearly visible reference of the HazardZone improving speed and flexibility of segregation

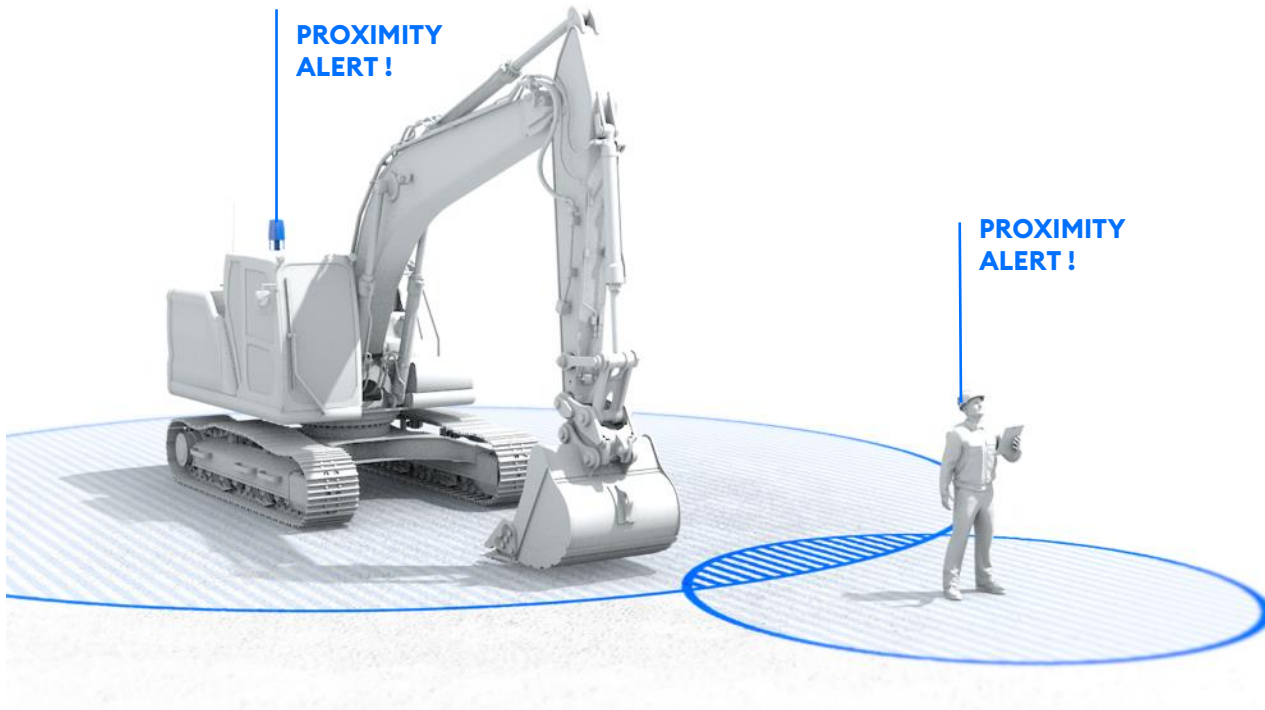
PROTECT



HazardTag

Control Access to the following zones based on role or purpose:

- Lifting zones
- Overhead work exclusion zones
- Areas with environmental restriction
- Edge protection at height
- Safety lanes (Highways)
- Buried or overhead service exclusion zones
- Zones protecting hazardous substances



A rapidly deployable HazardZone for machines, the MachineTag can be attached to a range of on-site equipment ranging from a visitors 4x4 to an 80-tonne excavator. The equipment can be temporarily mounted with non-invasive brackets meaning that more consistent protection is available protecting your people and damage to equipment.

PROTECT

MachineTag

- Monitor machine location, proximity and utilization
- Protect people from machines
- Protect Machinery from damage.
- Prevent collision with Buried or overhead services
- Restrict access to pedestrian areas
- Restrict access to zones with environmental restriction



**We realise you need
to collect data from
hard-to-reach
areas.**



CONNECT

Fast, Secure, reliable and flexible Network Infrastructure for large construction projects

A private network designed specifically for the construction environment that is deployable within minutes across large areas, deep within buildings or tunnels.

- Private, encrypted traffic
- Up-to 5km range
- Portable, move as the site adapts
- Extendible across long distances
- Not reliant on fixed power supply
- Works indoors and outdoors
- Internet connectivity included
- Weatherproof



**We realise that you
want to continuously
improve.**



AFFECT

Data now, for safer decisions in the future.

The browser-based platform allows you to configure hazard zones, manage workforce groups, display insights about activity over time and manage the flow of your data.

The system does not use any personal data, protecting the privacy of your workforce.

We understand the value of data sharing and as a result have created a secure bi-directional API which allows you to expose all Event data generated within the Affect platform to external services. We make it easy to send a SMS, Email or Webhook when an event occurs or configure hazard zones through your existing GIS system.



AFFECT

Sites Dashboard

Site:

PLINX demo site

Site Network Status



Site Event Status



Active Users On Site

4

Date from:

September, 24 2021 00:00

Date to:

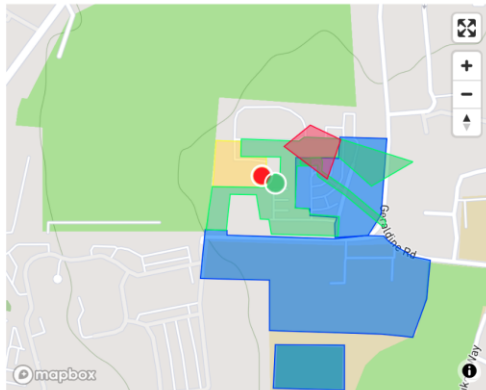
September, 24 2021 23:59

Event:

Hazard Zoning

Filter

Reset



Zone Occupancy (Time)



Event Log

Site:

PLINX demo site

User:

All Users

Device:

All Devices

Event type:

All

Date from:

September, 24 2021 00:00

Date to:

September, 24 2021 23:59

Filter

Reset

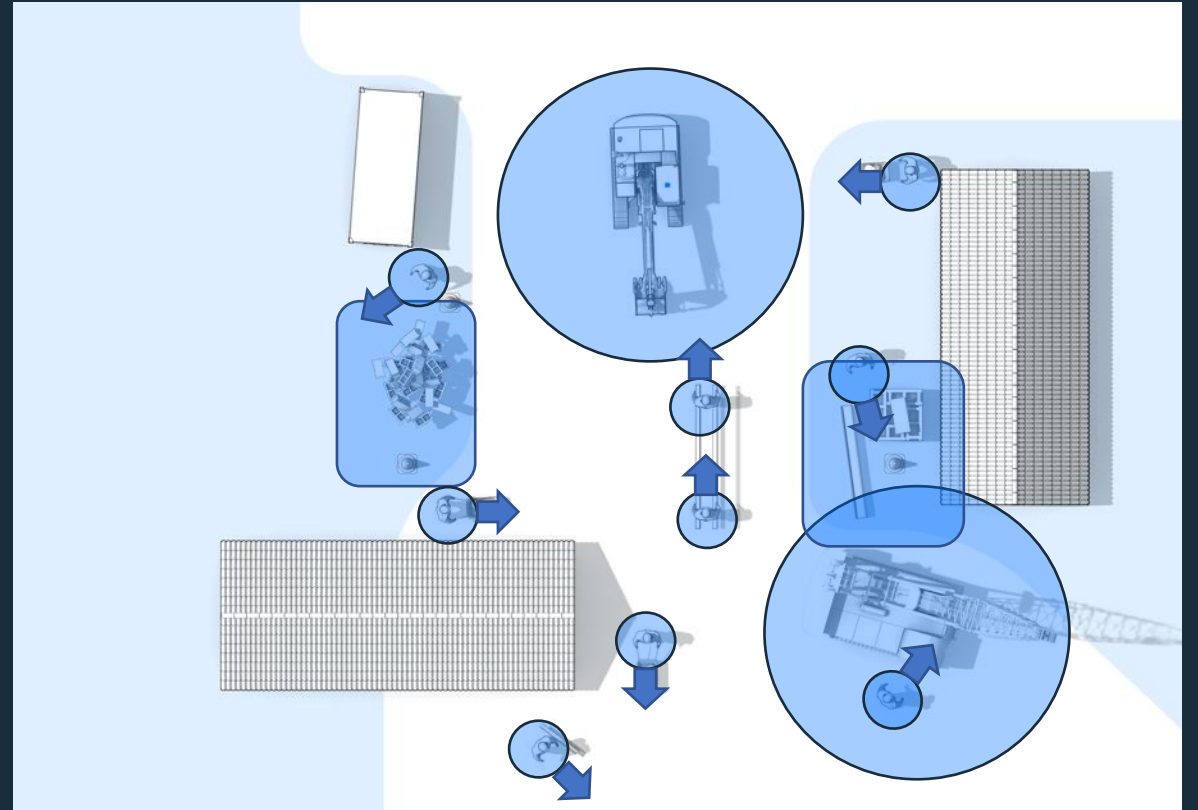
	User	Device	Event Type	Timestamp	Note
●	9997	99997	Allocated	24/09/2021 07:00	
●	9995	99995	Bump	24/09/2021 07:00	99992
●	9996	99996	Timeout Start	24/09/2021 07:00	
●	9996	99996	Tag Hazard Zone Exit	24/09/2021 07:00	Zone 2 - Allowed
●	9996	99996	Allocated	24/09/2021 07:00	
●	9995	99995	Hazard Zone Entry	24/09/2021 07:00	Zone 3 - Allowed
●	9998	99998	Allocated	24/09/2021 07:00	
●	9995	99995	Allocated	24/09/2021 07:00	
●	9998	99998	Hazard Zone Entry	24/09/2021 07:00	Zone 2 - Warning
●	9998	99998	Tag Hazard Zone Entry	24/09/2021 07:00	Zone 2 - Warning
●	9995	99995	Tag Hazard Zone Exit	24/09/2021 07:00	Zone 6 -
●	9998	99998	Hazard Zone Entry	24/09/2021 07:00	Zone 3 - Allowed
●	9997	99997	Tag Hazard Zone Exit	24/09/2021 07:00	Zone 3 - Allowed
●	9997	99997	Tag Hazard Zone Exit	24/09/2021 07:00	Test 123 -
●	9998	99998	Tag Hazard Zone Entry	24/09/2021 07:05	Zone 3 - Allowed
●	9998	99998	Tag Hazard Zone Exit	24/09/2021 07:05	Zone 2 - Warning



See the



Benefits





A PLINX PRESENTATION
Introducing Safety simplified

© PLINX 2021

**We are a technology
business gaining
traction.**



CASE STUDY - UK



CASE STUDY - UK



“The safety, health and wellbeing of our people is EKFB’s highest priority, so we are excited to introduce a technology that both supports and improves this. PLINX technology gives us an unrivalled ability to manage this, not only technically but also by showing people that we care enough about them to invest in new technology that helps.”

Glenn Christiansen, the Safety, Health, Wellbeing, Assurance and Compliance Director at EKFB



The Challenge

Without effective methods of social distancing on construction sites, EKFB will be forced to close or operate at reduced capacity, which can lead to delays and lost revenue



The Solution

A health and safety operating system that improves management of hazards, providing a robust audit trail protecting workers and employers.



The Outcome

80km wireless network // 1550 operatives protected
Social distancing & Contact tracing // SOS
Hazard Zoning // Tunnel location





CASE STUDY – HONG KONG



A PLINX PRESENTATION
Introducing Safety simplified

CASE STUDY – HONG KONG



The Challenge

Connectivity
Movement of People
Real time data
Hard to Reach Places



The Solution

HazardZone Safety
Tunnel Management
Employee Management
Productivity Monitor
5G



We are working with:



15	3000	185km
Use cases	devices	Networks



A PLINX PRESENTATION
Introducing Safety simplified

© PLINX 2021

5G

**Make Future Hazards
A Thing Of The Past**



A PLINX PRESENTATION
Introducing Safety simplified

© PLINX 2021

HELLO@PLINX.IO

PLINX, Malvern Hills Science park,
Geraldine Road, Malvern WR14 3SZ

